



Closings

CMS will be closed February 17, 2025 in observance of Presidents' Day.

There are no scheduled lessons or classes, and students are not billed.

WINTER GROUP CLASS & ENSEMBLE REGISTRATION

Registration is now open for winter group classes and ensembles!

Visit our website at

www.communitymusicbuffalo.org, stop by our front desk, or call at 716-884-4887 to register today!

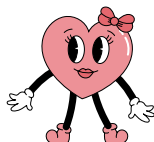
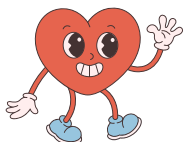
WEATHER CLOSINGS

A notice regarding closings will be posted on the website, social media and the School's voice mail system.

To learn of any weather-related closings, please call the School at 716-884-4887, check the website at www.communitymusicbuffalo.org, visit the School's Facebook page, listen to WBEN 930 or watch channels 2, 4 or 7 for information.

IMPORTANT: If a student is ill or showing any symptoms, please be considerate and contact the CMS Office to cancel your lesson. Any student absences will be made up as part of your teacher's Studio Makeup Day in January or April.

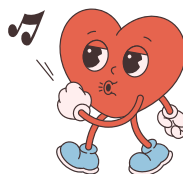
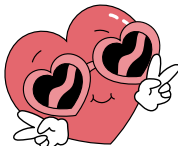
If you need to miss your lesson, please remember to CALL the CMS OFFICE at 884.4887 so we're able to notify your teacher.



Please visit our website for up to date information on all things CMS at www.communitymusicbuffalo.org!

Kenneth Atkinson Scholarship Competition

Kenneth Atkinson served as Piano Chair, and then Piano Chair Emeritus at CMS until his passing in 2018. During his 51-year tenure, Ken inspired countless students, colleagues, and audience members alike. This year's Kenneth Atkinson Scholarship Competition will be held on Saturday March 22. Students of all ages and levels are encouraged to participate. The award is a scholarship toward future study at CMS.



BILLING REMINDERS

Monthly tuition is due by the first of every month.

Auto Payments will be processed on the 1st of every month.

Students enrolled in autopayments will not receive a monthly statement.

If you'd like a copy of your monthly statement, please contact the CMS front office.

Help spread the word about CMS!

What do you like most about CMS? Click on each to leave us a review on [Google](#) or [Facebook](#) to let us know!

HAPPY Valentine's Day

GIVING

CMS turned 100 on October 16th. In honor of our birthday, will you donate to CMS? There are now many ways to give. Click the logo below to give today!



COMMUNITY FRIDGE DONATIONS

CMS continues to accept donations of perishable and non-perishable goods, bottled water, and personal hygiene items. Please drop them off at the table across from the front desk at our Hamlin Park location. There is still much food insecurity in our community! Your kindness is greatly appreciated!

Upcoming Events

"Hearts & Flowers" Recital

The "Hearts and Flowers Recital" will be held Saturday February 15 @ 12:00 p.m. This is open to all students. If you're interested in performing, please speak with your teacher and sign up at the front desk.

St. Patrick's Day/Green Recital

The "St. Patrick's Day Recital" will be held Saturday March 15 @ 12:00 p.m. This is open to all students. If you're interested in performing, please speak with your teacher and sign up at the front desk.

Skills Showcase

The Skills Showcase will be held May 16 - 18, 2024. Sign up sheets will be available at the front desk starting in April.

